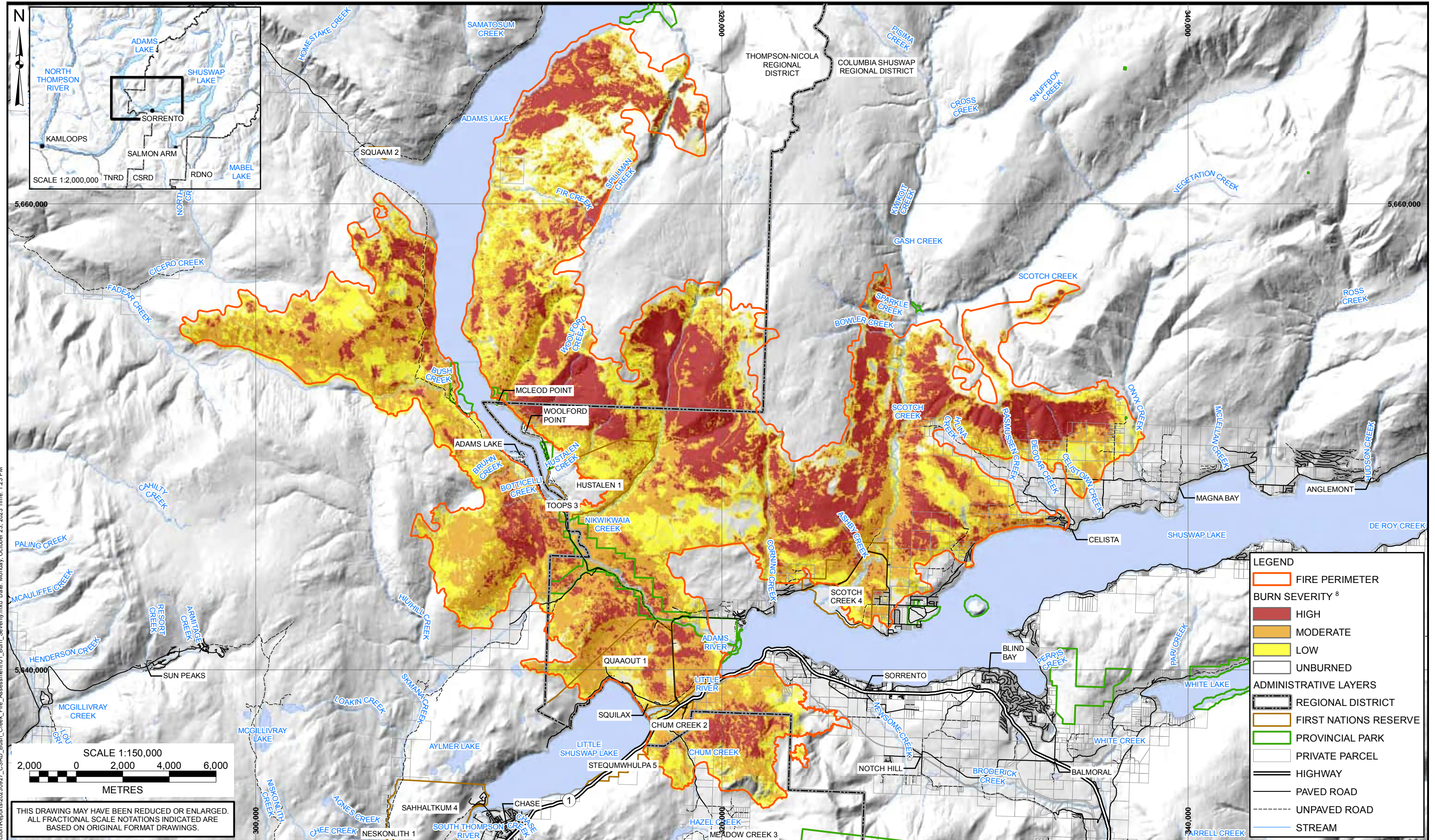


# Fire Perimeter



X:\Projects\1899009\GIS\Production\Reports\1899009\_GIS\Production\Reports\1899009\_Burn\_Severity.mxd Date: Monday, October 23, 2023 Time: 1:23 PM

- NOTES:**
1. ALL DIMENSIONS ARE IN METRES UNLESS OTHERWISE NOTED.
  2. THIS DRAWING MUST BE READ IN CONJUNCTION WITH BGC'S REPORT TITLED "BUSH CREEK EAST FIRE - POST-WILDFIRE GEOHAZARD ASSESSMENT FOR EMERGENCY DECISION SUPPORT" AND DATED OCTOBER 2023.
  3. BASE TOPOGRAPHIC DATA BASED ON LIDAR FROM NDMP, DATED 2019. CONTOUR INTERVAL IS 10 m.
  4. PARCEL DATA IS PARCELMAP BC (2021) FROM ICI SOCIETY.
  5. PROJECTION IS NAD 1983 UTM ZONE 11N. VERTICAL DATUM IS CGVD2013.
  6. HYDRO FEATURES FROM CANVEC. ONLY NAMED FEATURES ARE SHOWN.
  7. REGIONAL DISTRICTS, MUNICIPALITIES AND ROADS FROM GEO BC.

8. BURN SEVERITY DATA BASED ON IMAGERY FROM SEPT 8 TO 18, 2023.
9. MAPPED GEOHAZARD STUDY AREAS ONLY INCLUDE AREAS WITHIN OR WHICH MAY IMPACT THE CSRD.
10. FIRE PERIMETER RETRIEVED FROM THE BCWS ON SEPTEMBER 26, 2023.
11. BGC PREPARED THIS DRAWING FOR THE EXCLUSIVE USE OF BGC'S CLIENT IDENTIFIED ON THIS DRAWING. UNLESS BGC AGREES OTHERWISE IN WRITING, THIS DRAWING MUST NOT BE MODIFIED OR USED FOR ANY PURPOSE OTHER THAN THE SPECIFIC PURPOSE FOR WHICH BGC GENERATED IT. BGC SHALL HAVE NO LIABILITY FOR ANY DAMAGES, INJURY, OR LOSS ARISING FROM ANY UNAUTHORIZED USE OR MODIFICATION OF THIS DRAWING. THIRD PARTIES USE OR RELY UPON THIS DRAWING AT THEIR OWN RISK.

SCALE:	1:150,000
DATE:	OCT 2023
DRAWN:	MIB
REVIEW:	JG
APPROVED:	HW

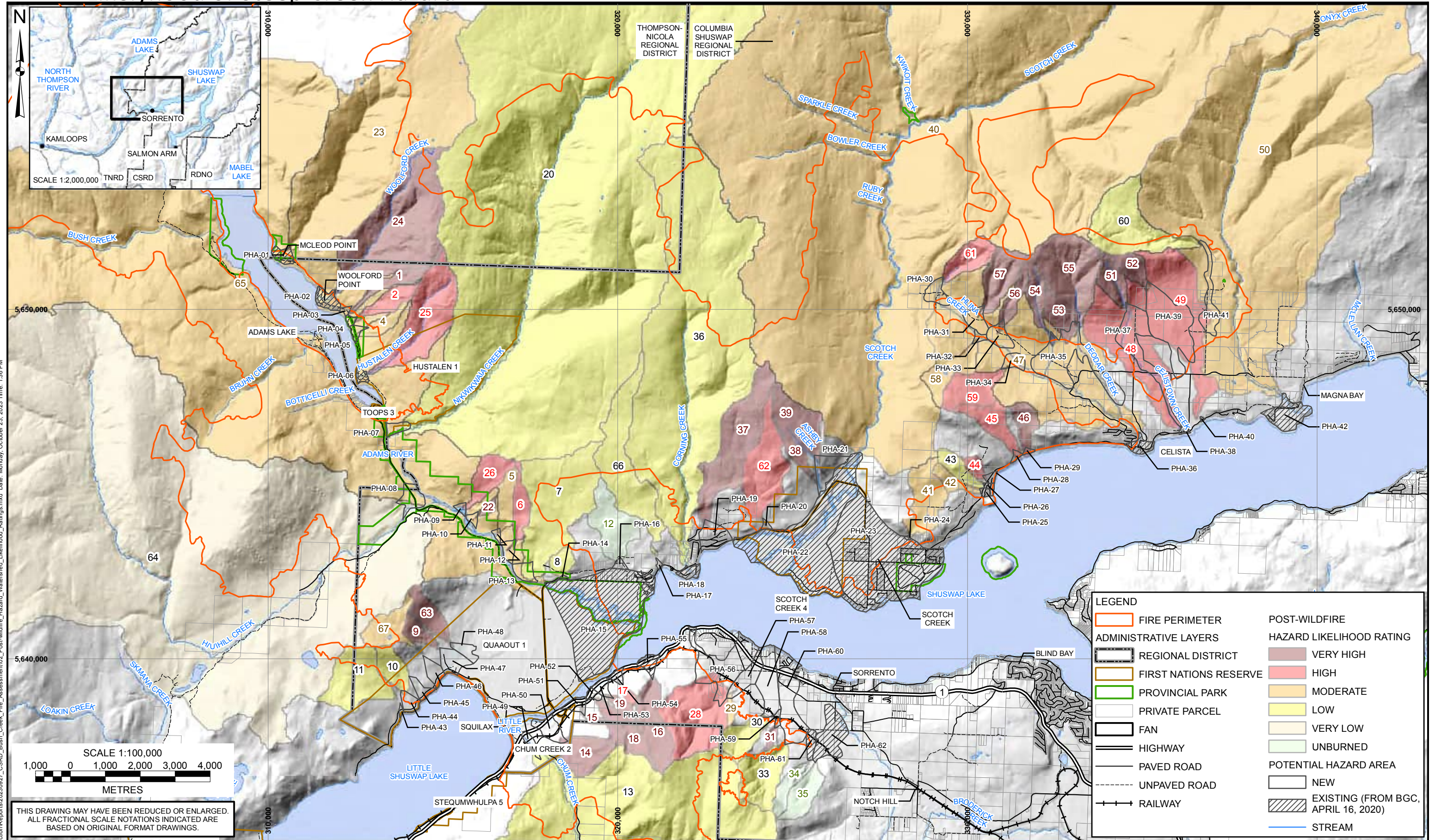
CLIENT:



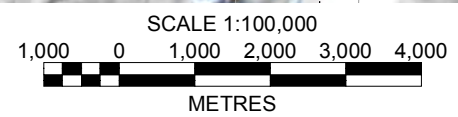

PROJECT: <b>BUSH CREEK EAST FIRE - POST-WILDFIRE GEOHAZARD ASSESSMENT FOR EMERGENCY DECISION SUPPORT</b>	
TITLE: <b>BURN SEVERITY</b>	
PROJECT No.: <b>1899009</b>	DWG No.: <b>01</b>



# Likelihood of Steep Creek Hazard



X:\Projects\1899\009\GIS\Production\Reports\2023\0927\_CS RD\_Bush\_Creek\_Fire\_Assessment\02\_Productions\Reports\2023\0927\_CS RD\_Bush\_Creek\_Fire\_Assessment.mxd Date: Monday, October 23, 2023 Time: 1:36 PM



THIS DRAWING MAY HAVE BEEN REDUCED OR ENLARGED.  
ALL FRACTIONAL SCALE NOTATIONS INDICATED ARE  
BASED ON ORIGINAL FORMAT DRAWINGS.

- NOTES:
1. ALL DIMENSIONS ARE IN METRES UNLESS OTHERWISE NOTED.
  2. THIS DRAWING MUST BE READ IN CONJUNCTION WITH BGC'S REPORT TITLED "BUSH CREEK EAST FIRE - POST-WILDFIRE GEOHAZARD ASSESSMENT FOR EMERGENCY DECISION SUPPORT" AND DATED OCTOBER 2023.
  3. BASE TOPOGRAPHIC DATA BASED ON CANADIAN DIGITAL ELEVATION DATA (CDED).
  4. PARCEL DATA IS PARCELMAP BC (2021) FROM ICI SOCIETY.
  5. PROJECTION IS NAD 1983 UTM ZONE 11N.
  6. HYDRO FEATURES FROM CANVEC. ONLY NAMED FEATURES ARE SHOWN.
  7. REGIONAL DISTRICTS, MUNICIPALITIES AND ROADS FROM GEO BC.
  8. FIRE PERIMETER RETRIEVED FROM THE BCWS ON SEPTEMBER 26, 2023.
  9. BGC PREPARED THIS DRAWING FOR THE EXCLUSIVE USE OF BGC'S CLIENT IDENTIFIED ON THIS DRAWING. UNLESS BGC AGREES OTHERWISE IN WRITING, THIS DRAWING MUST NOT BE MODIFIED OR USED FOR ANY PURPOSE OTHER THAN THE SPECIFIC PURPOSE FOR WHICH BGC GENERATED IT. BGC SHALL HAVE NO LIABILITY FOR ANY DAMAGES, INJURY, OR LOSS ARISING FROM ANY UNAUTHORIZED USE OR MODIFICATION OF THIS DRAWING. THIRD PARTIES USE OR RELY UPON THIS DRAWING AT THEIR OWN RISK.

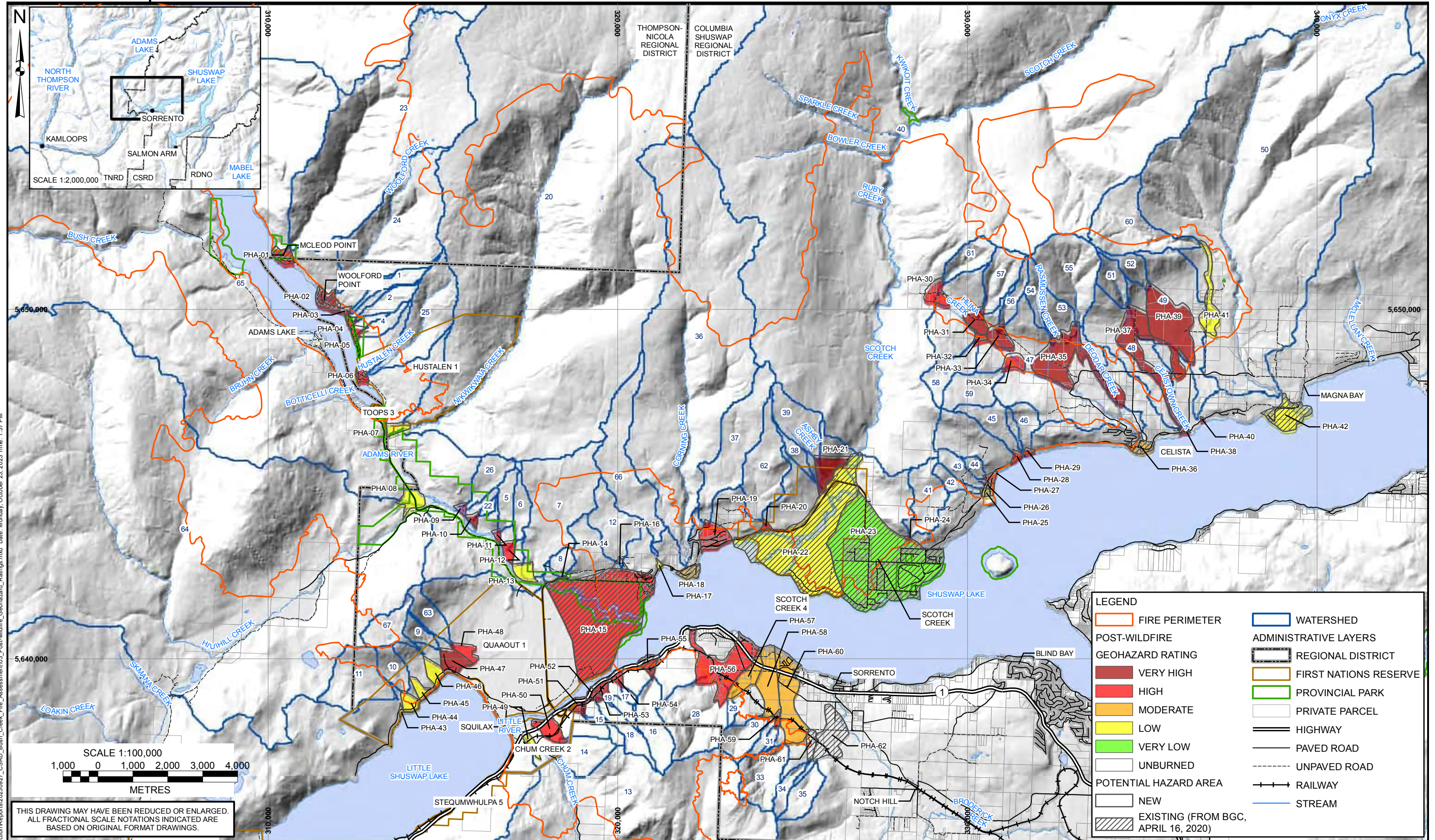
SCALE: 1:100,000  
DATE: OCT 2023  
DRAWN: LL  
REVIEW: JG  
APPROVED: HW



PROJECT: BUSH CREEK EAST FIRE - POST-WILDFIRE GEOHAZARD ASSESSMENT FOR EMERGENCY DECISION SUPPORT  
TITLE: POST-WILDFIRE HAZARD LIKELIHOOD RATINGS (STEEP CREEK)  
PROJECT No.: 1899009  
DWG No.: 02



# Steep Creek Hazard



X:\Projects\1899\009\GIS\Production\Reports\2023\0927\_CS RD\_Bush\_Creek\_Fire\_Assessment\03\_Post-wildfire\_Geohazard\_Ratings.mxd Date: Monday, October 23, 2023 Time: 1:37 PM

NOTES:  
 1. ALL DIMENSIONS ARE IN METRES UNLESS OTHERWISE NOTED.  
 2. THIS DRAWING MUST BE READ IN CONJUNCTION WITH BGC'S REPORT TITLED "BUSH CREEK EAST FIRE - POST-WILDFIRE GEOHAZARD ASSESSMENT FOR EMERGENCY DECISION SUPPORT" AND DATED OCTOBER 2023.  
 3. BASE TOPOGRAPHIC DATA BASED ON CANADIAN DIGITAL ELEVATION DATA (CDED).  
 4. PARCEL DATA IS PARCELMAP BC (2021) FROM ICI SOCIETY.  
 5. PROJECTION IS NAD 1983 UTM ZONE 11N.  
 6. HYDRO FEATURES FROM CANVEC. ONLY NAMED FEATURES ARE SHOWN.

7. REGIONAL DISTRICTS, MUNICIPALITIES AND ROADS FROM GEO BC.  
 8. FIRE PERIMETER RETRIEVED FROM THE BCWS ON SEPTEMBER 26, 2023.  
 9. BGC PREPARED THIS DRAWING FOR THE EXCLUSIVE USE OF BGC'S CLIENT IDENTIFIED ON THIS DRAWING. UNLESS BGC AGREES OTHERWISE IN WRITING, THIS DRAWING MUST NOT BE MODIFIED OR USED FOR ANY PURPOSE OTHER THAN THE SPECIFIC PURPOSE FOR WHICH BGC GENERATED IT. BGC SHALL HAVE NO LIABILITY FOR ANY DAMAGES, INJURY, OR LOSS ARISING FROM ANY UNAUTHORIZED USE OR MODIFICATION OF THIS DRAWING. THIRD PARTIES USE OR RELY UPON THIS DRAWING AT THEIR OWN RISK.

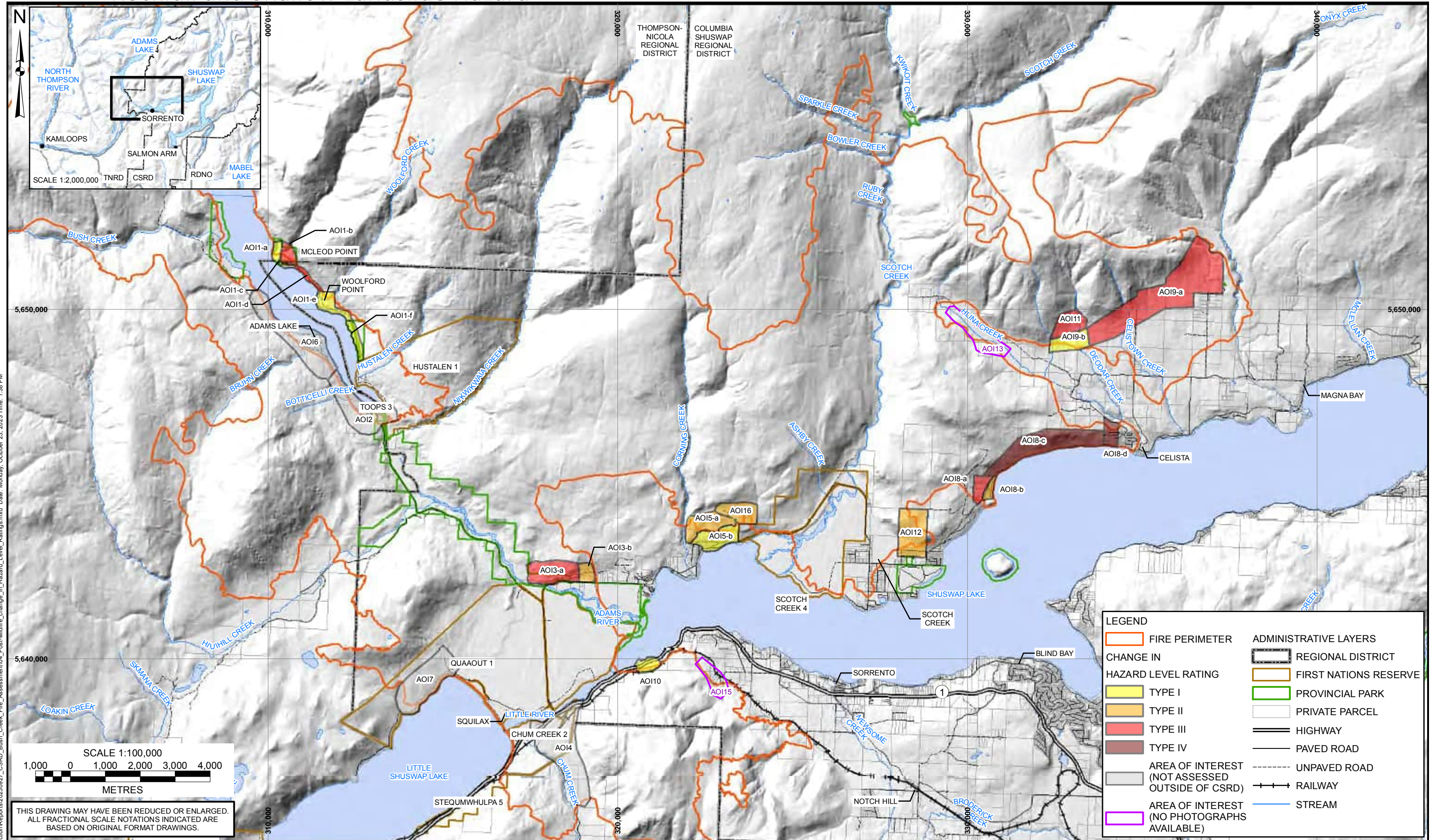
SCALE: 1:100,000  
 DATE: OCT 2023  
 DRAWN: LL  
 REVIEW: JG  
 APPROVED: HW



PROJECT: BUSH CREEK EAST FIRE - POST-WILDFIRE GEOHAZARD ASSESSMENT FOR EMERGENCY DECISION SUPPORT  
 TITLE: POST-WILDFIRE GEOHAZARD RATINGS (STEEP CREEK)  
 PROJECT No.: 1899009  
 DWG No.: 03



# Rockfall and Shallow Landslide Hazard



X:\Projects\1899\09\GIS\Production\Reports\2023\0927\_CSRD\_Bush\_Creek\_Fire\_Assessment\04\_Post-wildfire\_change\_in\_Hazard\_Level\_Ratings.mxd Date: Monday, October 23, 2023 Time: 1:38 PM

NOTES:  
 1. ALL DIMENSIONS ARE IN METRES UNLESS OTHERWISE NOTED.  
 2. THIS DRAWING MUST BE READ IN CONJUNCTION WITH BGC'S REPORT TITLED "BUSH CREEK EAST FIRE - POST-WILDFIRE GEOHAZARD ASSESSMENT FOR EMERGENCY DECISION SUPPORT" AND DATED OCTOBER 2023.  
 3. BASE TOPOGRAPHIC DATA BASED ON CANADIAN DIGITAL ELEVATION DATA (CDED).  
 4. PARCEL DATA IS PARCELMAP BC (2021) FROM ICI SOCIETY.  
 5. PROJECTION IS NAD 1983 UTM ZONE 11N.  
 6. HYDRO FEATURES FROM CANVEC. ONLY NAMED FEATURES ARE SHOWN.  
 7. REGIONAL DISTRICTS, MUNICIPALITIES AND ROADS FROM GEO BC.  
 8. FIRE PERIMETER RETRIEVED FROM THE BCWS ON SEPTEMBER 26, 2023.  
 9. BGC PREPARED THIS DRAWING FOR THE EXCLUSIVE USE OF BGC'S CLIENT IDENTIFIED ON THIS DRAWING. UNLESS BGC AGREES OTHERWISE IN WRITING, THIS DRAWING MUST NOT BE MODIFIED OR USED FOR ANY PURPOSE OTHER THAN THE SPECIFIC PURPOSE FOR WHICH BGC GENERATED IT. BGC SHALL HAVE NO LIABILITY FOR ANY DAMAGES, INJURY, OR LOSS ARISING FROM ANY UNAUTHORIZED USE OR MODIFICATION OF THIS DRAWING. THIRD PARTIES USE OR RELY UPON THIS DRAWING AT THEIR OWN RISK.

SCALE:	1:100,000	CLIENT:	 	
DATE:	OCT 2023	PROJECT:		BUSH CREEK EAST FIRE - POST-WILDFIRE GEOHAZARD ASSESSMENT FOR EMERGENCY DECISION SUPPORT
DRAWN:	LL	TITLE:		POST-WILDFIRE CHANGE IN HAZARD LEVEL RATINGS (ROCKFALL AND SHALLOW LANDSLIDE)
REVIEW:	JG	PROJECT No.:		1899009
APPROVED:	NS	DWG No.:		04



**B-1 POST-WILDFIRE STEEP CREEK HAZARD**

Location			Watershed Hazard Characterization				Potential Hazard Area Relative Risk Characterization <sup>1</sup>		
Potential Hazard Area ID	Description	Existing <sup>2</sup> or New Hazard Area?	Watershed ID	Process Type	Burn Severity Index	Post-wildfire Hazard Likelihood	“Baseline” Impact Likelihood	Post-wildfire Impact Likelihood	Post-wildfire Geohazard Rating
PHA-01	McLeod Point	Existing	23	III	Low	Moderate	Moderate	High	High
PHA-02	Woolford Point, Woolford Creek	Existing	24	III	Very High	Very High	Moderate	High	Very High
PHA-03	South of Woolford Point	New	1	IV	Very High	Very High	Moderate	High	Very High
PHA-04	South of Woolford Point	New	2	IV	Low	High	Moderate	High	High
PHA-05	South of Woolford Point	New	4	IV	Very Low	Moderate	Moderate	High	High
PHA-06	Hustalen Creek, Hustalen 1	Existing	25	III	Moderate	High	Moderate	High	High
PHA-07	Nikwikwaia Creek, Hustalen 1	New	20	I	Low	Low	Very Low	Low	Low
PHA-08	Hiuihill Creek, Roderick Haig-Brown Provincial Park	New	64	I	Very Low	Very Low	Low	Moderate	Low
PHA-09	Roderick Haig-Brown Provincial Park	New	26	III	Moderate	High	Moderate	High	High
PHA-10	Roderick Haig-Brown Provincial Park	New	22	IV	Very High	Very High	Moderate	High	Very High
PHA-11	Roderick Haig-Brown Provincial Park	New	5	III	Low	Moderate	Moderate	High	High
PHA-12	Roderick Haig-Brown Provincial Park	New	6	III	Moderate	High	Low	Moderate	High
PHA-13	Roderick Haig-Brown Provincial Park	New	7	III	Very Low	Low	Low	Moderate	Low
PHA-14	Roderick Haig-Brown Provincial Park	New	8	III	Very Low	Low	Very Low	Low	Low
PHA-15	Adams River / Lee Creek	Existing	65	I	Low	Moderate	High	Very High	High
PHA-16	Lee Creek community	New	12	III	Omit - Unburned	Omit - Unburned	Very Low	Low	Unburned
PHA-17	Mackay Bay	New	66	III	Very Low	Low	Very Low	Low	Low

<sup>1</sup> Where multiple watersheds drain onto a single Potential Hazard Area, the watershed with the highest Post-wildfire Hazard Likelihood rating (if different) was used to calculate the Geohazard Rating.

<sup>2</sup> “Existing” Hazard Area refers to a fan was mapped and characterized in the previous assessment (BGC, April 16, 2020).

Location			Watershed Hazard Characterization				Potential Hazard Area Relative Risk Characterization <sup>1</sup>		
Potential Hazard Area ID	Description	Existing <sup>2</sup> or New Hazard Area?	Watershed ID	Process Type	Burn Severity Index	Post-wildfire Hazard Likelihood	“Baseline” Impact Likelihood	Post-wildfire Impact Likelihood	Post-wildfire Geohazard Rating
PHA-18	Corning Creek	Existing	36	II	Low	Low	Moderate	High	Moderate
PHA-19	Indigo Bay	New	37	III	Very High	Very High	Low	Moderate	High
PHA-20	Scotch Creek 4	New	62	III	High	High	Moderate	High	High
PHA-21	Scotch Creek 4 (north)	New	38	IV	Very High	Very High	Moderate	High	Very High
			39	III	Very High	Very High			
PHA-22	Scotch Creek 4	Existing	40	I	Very Low	Very Low	Moderate	High	Low
PHA-23	Scotch Creek community	Existing	40	I	Very Low	Very Low	Very Low	Low	Very Low
PHA-24	Scotch Creek community (north)	New	41	III	Low	Moderate	Moderate	High	High
PHA-25	Between Scotch Creek and Celista	New	42	III	Low	Moderate	Very Low	Low	Low
PHA-26	Between Scotch Creek and Celista	New	43	III	Very Low	Low	Low	Moderate	Low
PHA-27	Between Scotch Creek and Celista	New	44	III	High	High	Low	Moderate	High
PHA-28	Between Scotch Creek and Celista	New	45	III	Moderate	High	Moderate	High	High
PHA-29	Between Scotch Creek and Celista	New	46	III	Very High	Very High	Low	Moderate	High
PHA-30	Hilna Creek Valley (Meadow Creek Road)	New	61	IV	Moderate	High	Moderate	High	High
PHA-31	Hilna Creek Valley (Meadow Creek Road)	New	57	IV	High	Very High	Moderate	High	Very High
PHA-32	Hilna Creek Valley (Meadow Creek Road)	New	58	III	Low	Moderate	Moderate	High	High
PHA-33	Hilna Creek Valley (Meadow Creek Road)	New	56	IV	High	Very High	Moderate	High	Very High
PHA-34	Hilna Creek Valley (Meadow Creek Road)	New	59	III	Moderate	High	Moderate	High	High
PHA-35		New	53	III	Very High	Very High	Moderate	High	Very High

Location			Watershed Hazard Characterization				Potential Hazard Area Relative Risk Characterization <sup>1</sup>		
Potential Hazard Area ID	Description	Existing <sup>2</sup> or New Hazard Area?	Watershed ID	Process Type	Burn Severity Index	Post-wildfire Hazard Likelihood	“Baseline” Impact Likelihood	Post-wildfire Impact Likelihood	Post-wildfire Geohazard Rating
	Deodar Creek area, west of Evans Road		54	IV	Very High	Very High			
			55	III	Very High	Very High			
PHA-36	Celista	Existing	47	II	Moderate	Moderate	Low	Moderate	Moderate
PHA-37	Celistown Creek	New	51	IV	Very High	Very High	Moderate	High	Very High
PHA-38	Between Celista and Blake Point	Existing	48	III	Moderate	High	Low	Moderate	High
PHA-39	Between Evans Road and Garland Road	New	52	IV	Very High	Very High	Moderate	High	Very High
PHA-40	Between Celista and Blake Point	Existing	49	III	High	High	Low	Moderate	High
PHA-41	East of Garland Road	New	60	III	Very Low	Low	Low	Moderate	Low
PHA-42	Onyx Creek, Magna Bay at Blake Point	Existing	50	II	Very Low	Moderate	Low	Low	Low
PHA-43	Quaaout 1	New	11	III	Very Low	Low	Low	Moderate	Low
PHA-44	Quaaout 1	New	10	III	Very Low	Low	Low	Moderate	Low
PHA-45	Quaaout 1	New	10	III	Very Low	Low	Very Low	Low	Low
PHA-46	Quaaout 1	New	67	III	Low	Moderate	Very Low	Low	Low
PHA-47	Quaaout 1	New	9	IV	Very High	Very High	Moderate	High	Very High
PHA-48	Quaaout 1	New	63	III	Very High	Very High	Very Low	Low	High
PHA-49	Chum Creek, Chum Creek 2	New	13	II	Very Low	Low	Low	Moderate	Low
PHA-50	Chum Creek 2	New	14	III	Very High	Very High	Very Low	Low	High
PHA-51	Hwy 1 between Little River Bridge and Cruikshank Point	New	15	IV	Very High	Very High	Moderate	High	Very High
PHA-52	Hwy 1 between Little River Bridge and Cruikshank Point	New	18	IV	Very High	Very High	Moderate	High	Very High
PHA-53	Hwy 1 between Little River Bridge and Cruikshank Point	New	19	IV	Very High	Very High	Moderate	High	Very High
PHA-54	Hwy 1 between Little River Bridge and Cruikshank Point	New	17	IV	Moderate	High	Moderate	High	High

Location			Watershed Hazard Characterization				Potential Hazard Area Relative Risk Characterization <sup>1</sup>		
Potential Hazard Area ID	Description	Existing <sup>2</sup> or New Hazard Area?	Watershed ID	Process Type	Burn Severity Index	Post-wildfire Hazard Likelihood	“Baseline” Impact Likelihood	Post-wildfire Impact Likelihood	Post-wildfire Geohazard Rating
PHA-55	Hwy 1 between Little River Bridge and Cruikshank Point	Existing	16	IV	Very High	Very High	Moderate	High	Very High
PHA-56	Elson and Cruikshank Point	New	28	III	Moderate	High	Moderate	High	High
PHA-57	Between Elson and Sorrento	New	29	IV	Very Low	Moderate	Low	Moderate	Moderate
PHA-58	Between Elson and Sorrento	New	30	III	Very Low	Low	Moderate	High	Moderate
PHA-59	Between Elson and Sorrento	New	31	IV	Very High	Very High	Moderate	High	Very High
PHA-60	Between Elson and Sorrento	New	33	III	Very Low	Low	Moderate	High	Moderate
PHA-61	Sorrento (south)	Existing	34	IV	Omit - Unburned	Omit - Unburned	Moderate	High	Unburned
PHA-62	Sorrento (south)	Existing	35	IV	Omit - Unburned	Omit - Unburned	Moderate	High	Unburned



## B-2 POST-WILDFIRE ROCKFALL AND SHALLOW LANDSLIDE HAZARD

Area of Interest	Location	Slope Condition	Propagation Area	Change in Hazard Level Type
AOI1-a	Adams Lake East McLeod Point North	Moderate burn	Outside rollout zone	Type I
AOI1-b	Adams Lake East McLeod Point Upper	Moderate burn and steep/rocky	Partial barrier	Type III
AOI1-c	Adams Lake East McLeod Point Lower	Moderate burn and steep/rocky	Barrier	Type II
AOI1-d	Adams Lake East Between McLeod Point and Woolford Point	Moderate burn and steep/rocky	Partial barrier	Type III
AOI1-e	Adams Lake East Woolford Point	Mild burn	Outside rollout zone	Type I
AOI1-f	Adams Lake East Hustalen Creek	Unburned	Barrier	Type I
AOI3-a	Adams River South	Severe burn	Partial barrier	Type III
AOI3-b	Adams River South	Mild burn	Barrier	Type II
AOI5-a	Lee Creek Drive West	Moderate burn	Barrier	Type II
AOI5-b	Lee Creek Drive Lower	Moderate burn	Outside rollout zone	Type I
AOI8-a	Between Scotch Creek and Celistia West Upper	Moderate burn	No barrier / at toe of slope	Type III
AOI8-b	Between Scotch Creek and Celistia West Lower	Moderate burn	Partial barrier	Type II
AOI8-c	Between Scotch Creek and Celistia	Severe burn and steep/rocky	Partial barrier	Type IV
AOI8-d	Between Scotch Creek and Celistia East	Severe burn and steep/rocky	Partial barrier or no barrier / at toe of slope	Type IV
AOI9-a	Mount Riley	Severe burn	Partial barrier	Type III
AOI9-b	Mount Riley	Severe burn	Outside rollout zone	Type I
AOI10	Little River Boatworld	Mild burn	Outside rollout zone	Type I
AOI11	North of Celistia	Severe burn	Partial barrier	Type III
AOI12	Scotch Creek North	Severe burn	Barrier	Type II
AOI16	Lee Creek Drive Upper	Moderate burn	Partial barrier	Type II